

ITI Quiz - 02-Jun-2026 may month E M TRADE

Q. ID: ITISKILL8855E3

June 2026

Question Paper

Student: Sankanahalli naanu

Score: 149/152 (98.03%)

Code: 4897

1. Which bearing is supporting the shaft of moving coil assembly in a PMMC instrument?

- A) Steel bearings B) Bush bearings
C) Jewelled bearings (Correct) D) Gun metal bearings

2. What is the full form of the abbreviation PMMC meter?

- A) Parallel Magnet Moving Coil meter B) Position Magnet Moving Coil meter
C) Principle Magnet Moving Coil meter **D) Permanent Magnet Moving Coil meter (Correct)**

3. Which type of wave is generated in Schmitt trigger circuit?

- A) Sine wave **B) Square wave (Correct)**
C) Saw tooth wave D) Triangular wave

4. Which band is used for UHF in International Telecommunication System?

- A) Band 4 B) Band 6
C) Band 9 (Correct) D) Band 11

5. Which parameter is measured by a multimeter?

- A) Voltage (Correct)** B) Energy
C) Frequency D) Time duration

6. Which instrument used to measure resistance, capacitance and inductance?

- A) LCR bridge (Correct)** B) Wein bridge
C) Kelvin bridge D) Wheatstone bridge

7. Which function control in CRO, adjust the trace sharper?

- A) Focus (Correct)** B) Intensity
C) Time/Div trigger D) Amplitude (V/Div)

8. What is the advantage of using digital multimeter?

- A) Accuracy (Correct)** B) Linear scale
C) Easy portability D) Logarithmic scale

9. How power rating is specified for transformers?

- A) Watts (W) B) Voltage (V)

C) Volt ampere (VA) (Correct)

D) Horse power (HP)

10. Which component opposes any change in current?

- A) Diode B) Resistor
C) Inductor (Correct) D) Capacitor

11. Which value is equal to one picofarad?

- A) 106 Farad B) 1012 Farad
C) 10-6 Farad **D) 10-12 Farad (Correct)**

12. What is the colour code for 100 Ohm resistor?

- A) Brown, black, red B) Black, brown, black
C) Brown, black, brown (Correct) D) Brown, brown, brown

13. Which property of the capacitor stores electrical energy in electrostatic field?

- A) Dielectric B) Capacitance
C) Stray capacitance **D) Capacitive reactance (Correct)**

14. Which unit is used to measure capacitance value?

- A) Mho B) Ohm
C) Farad (Correct) D) Henry

15. Which meter is used to find the exact resistance value of resistors?

- A) Ammeter B) Volt meter
C) Ohm meter (Correct) D) Watt meter

16. Find the total resistance value of 10 ohms and 20 ohms connected in parallel.

- A) 6.666 Ohms (Correct)** B) 66.66 Ohms
C) 666.6 Ohms D) 6666 Ohms

17. Find the total inductance value of two inductors 10H and 15H of connected in series.

- A) 05 H B) 10 H
C) 15 H **D) 25 H (Correct)**

18. Which part of the relay causes most trouble?

- A) Hinges
C) Relay contacts (Correct) B) Relay coil
D) Frame and core

19. What is the power supply required to operate the most standard TTL ICs properly?

- A) + 1.5v to +2.5V
C) + 4.75v to + 5.25V (Correct) B) - 1.5v to - 2.5V
D) + 7.5v to + 12V

20. What is the digital signal value for the analog signal value 6V?

- A) 100
C) 110 (Correct) B) 101
D) 111

21. What is the decimal number for the binary number 0101?

- A) 4
B) 5 (Correct) C) 6
D) 7

22. What is the use of flip - flop?

- A) It stores energy
C) It stores current
B) It stores voltage
D) It stores binary information (Correct)

23. How the gas and liquefied gases are classified

- A) Class A fire
C) Class C fire
B) Class B fire (Correct) D) Class D fire

24. Which fire extinguisher is used to put off class C type of fire?

- A) Foam type
C) Dry powdered (Correct) B) Jet of water
D) Carbon-di-oxide

25. Which fire extinguisher is used to put off class A type of fire?

- A) Foam type
C) Dry powdered
B) Jet of water (Correct) D) Carbon-di-oxide

26. What is the shape of mandatory signs?

- A) Square
C) Triangular
B) Circular (Correct) D) Rectangular

27. Which material is used for making instrument cabinets?

- A) Wood
C) Hard rubber
B) Plastic
D) Sheet metal (Correct)

28. What is the shape of warning sign board?

- A) Square shape
C) Triangular shape (Correct) B) Circular shape
D) Hexagonal shape

29. Which step is followed for treating a person from electric shock?

- A) Provide water
C) Cover the victim with a coat
B) Keep the victim cold
D) Move the victim to a ventilated place (Correct)

30. What is the shape of prohibition sign?

- A) Square
C) Triangular
B) Circular (Correct) D) Rectangular

31. What is the use of screw driver?

- A) Hold the screws
C) Tighten or loosen bolts
B) Tighten or loosen screws (Correct)
D) Tighten or loosen rivets

32. What is the reason for electric fire?

- A) Deviation
C) Overloading (Correct) B) Open circuit
D) Proper earthing

33. What is the cause of injuring at the time of lifting a load?

- A) Heavy load
C) Object striking the load
B) Falling object
D) Wrong lifting technique (Correct)

34. Electrical conductivity of gold is

- A) 56%
C) 94%
B) 67% (Correct) D) 100%

35. What is the unit of electric charge?

- A) Volts
C) Ampere
B) Hertz
D) Coulomb (Correct)

36. Which electrical parameter opposes the flow of electrons?

- A) Power
C) Current
B) Voltage (Incorrect)
D) Resistance

37. How the single strand wire is called?

- A) Flexible wire
C) Hook up wire (Correct) B) Twisted wire
D) Multi strand wire

38. What is the purpose of covering provided over the electrical conductor?

- A) Increase current flow
C) Decrease voltage rating
B) Reduce current flow
D) Protection against weather (Correct)

39. How many electrons are contained in coulomb of electric charge?

- A) 6.25×10^8 electrons
B) 6.25×10^{12} electrons

C) 6.25×10^{16} electrons

D) 6.25×10^{18} electrons (Correct)

C) 2.5 to 4.5 Amp

D) 100 to 400 Amp (Correct)

40. What is the percentage of conductivity of electric current in silver?

A) 0.56

B) 0.67

C) 0.94

D) 1 (Correct)

50. What is the colour of positive electrode in fully charged lead acid battery?

A) Red colour

B) Grey colour

C) Reddish brown (Correct)

D) Spongy grey colour

41. Which formula is used to find the conductance?

A) Q / V

B) $I \times R$

C) V / I

D) I / V (Correct)

51. Which energy is converted by the battery to produce electricity?

A) Electrical energy into light energy

B) Chemical energy into electrical energy (Correct)

C) Mechanical energy into electrical energy

D) Electrical energy into mechanical energy

42. Which materials are used for semiconductor?

A) Gallium and indium

B) Silver and aluminium

C) Arsenic and antimony

D) Silicon and germanium (Correct)

52. What is the total voltage of six 1.5 V cells, connected in series?

A) 3 VDC

B) 6 VDC (Incorrect)

C) 9 VDC

D) 12 VDC

43. How the insulators are called?

A) Thyristors

B) Molecules

C) Dielectrics (Correct)

D) Semiconductors

53. Which device is used to test the fully charged condition of a lead acid battery cell?

A) Multimeter

B) Hydrometer

C) DC voltmeter

D) High rate discharge tester (Correct)

44. Which tool is used for the simplest method of skinning wires?

A) Electrician's knife (Correct)

B) Manual wire stripper

C) Thermal wire stripper

D) Mechanical wire stripper

54. What are the uses of simulation softwares?

A) Design a circuit

B) Design and test a circuit (Correct)

C) Replace defective components

D) Solder and desolder components

45. What is the name of the pair of metal strips used in battery cell?

A) Cathode

B) Electrolyte

C) Electrodes (Correct)

D) Carbon rod

46. Which electrolyte is used in lead-acid battery?

A) Zinc chloride

B) Sulphuric acid (Correct)

C) Alkaline solution

D) Potassium hydroxide solution

55. Which is electronic simulation software?

A) AutoCAD

B) MS Office

C) Macspice (Correct)

D) Photoshop

47. How batteries are classified?

A) Dry cells and alkaline cells

B) Button cells and lithium cells

C) Primary cells and secondary cells (Correct)

D) Cylindrical cells and rectangular cells

56. Which software is used to simulate electronic circuits?

A) Auto cad

B) Multi sim (Correct)

C) MS office

D) Photo shop

48. What is the unit of electric charge?

A) Volts

B) Hertz

C) Ampere

D) Coulomb (Correct)

57. How many transistors are built inside the Very Large Scale Integration (VLSI) IC package?

A) 1000 and above (Correct)

B) 1 to 10 transistors

C) 10 to 100 transistors

D) 100 to 1000 transistors

49. What is the range of current rating of lead acid batteries used in automobiles?

A) 5 to 10 Amp

B) 10 to 25 Amp

58. Which IC package consist of 100 to 1000 transistors?

A) Large scale integration (LSI) (Correct)

B) Small scale integration (SSI)

C) Medium scale integration (MSI)

D) Very large scale integration (VLSI)

59. Which is the 3 terminal, negative voltage regulator IC?

- A) LM 320
B) LM 340
C) **IC 7905 (Correct)**
D) IC 7812

60. Which type of voltage regulator is IC 723?

- A) Multipin variable voltage regulator
B) Three pin positive voltage regulator
C) Three pin negative voltage regulator
D) **Three pin adjustable voltage regulator (Correct)**

61. Which material is used to make LDR for lower end requirements?

- A) Aluminium sulfide
B) **Cadmium sulfide (Correct)**
C) Zinc sulfide
D) Copper sulfide

62. Which is the combination of photo transistor?

- A) LASER diode and pin diode
B) Photo transistor and DIAC
C) **Photo diode and transistor (Correct)**
D) Photo resistor and TRIAC

63. What is the use of photo transistor?

- A) Used in comparator circuit
B) **Used as light controlled switch (Correct)**
C) Used as oscillator
D) Used as demodulator

64. What is the main application of photo resistor?

- A) Voltage rectification
B) Demodulation purpose
C) **Controls of street lighting systems (Correct)**
D) To generate oscillations

65. What is the natural shape of a quartz crystal?

- A) Cylindrical shape with pyramid at ends
B) Cube shape with pyramid at ends
C) Pentagonal prism with pyramid at ends
D) **Hexagonal prism with pyramid at ends (Correct)**

66. Which circuit is determined by the frequency of LC tank circuit?

- A) **Oscillator (Correct)**
B) Amplifier
C) Multiplexed
D) Demodulator

67. Which circuits commonly use parallel-fed Hartley oscillators?

- A) Stereo amplifiers
B) **Radio receivers (Correct)**
C) Television receivers
D) Automatic voltage stabilizers

68. What type of feed back is used by the Wein-bridge oscillator to oscillate the signal?

- A) No feedback
B) Positive feedback
C) Negative feedback
D) **Both positive and negative feedback (Correct)**

69. Which is the transistor used to operate the Colpitts oscillator?

- A) AC 127
B) **BF 194B (Correct)**
C) BC 148B
D) AC 188

70. What is the maximum forward gate current (I_g) for BFW10 JFET?

- A) 5 mA
B) 8 mA
C) **10 mA (Correct)**
D) 20 mA

71. What is the gate current (I_g) of the JFET, when reverse biased?

- A) Practically very low
B) **Practically zero (Correct)**
C) Practically unity
D) Practically infinity

72. Which device is a unipolar transistor?

- A) UJT
B) **FET (Correct)**
C) BJT
D) IGBT

73. What is the code number of TRIAC?

- A) 2N2646
B) BFW10
C) **BT136 (Correct)**
D) 2N1597

74. Which current flows in TRIAC between MT1 and MT2?

- A) Conventional current
B) **Principal current (Correct)**
C) Reverse current
D) Leakage current

75. How many layers of PN - junctions are used in SCR fabrication?

- A) Two layer two junctions
B) **Four layer three junctions (Correct)**
C) Three layer three junctions
D) Three layer four junctions

76. Which component filter the ripples in the rectifier circuit?

- A) DIAC
B) Diode
C) TRIAC
D) **Capacitor (Correct)**

77. Which parameter is maintained constant in zener diode?

- A) Power
B) Current
C) **Voltage (Correct)**
D) Resistance

78. When does the zener diode begins to conduct in the reverse biased condition?

A) When bias voltage reached 0.7V

B) After the barrier voltage cancelled

C) Voltage across zener reached 0.3V

D) Voltage across it reached the zener voltage (Correct)

A) 150 Degree Centigrade to 450 Degree Centigrade (Correct)

B) 450 Degree Centigrade to 600 Degree Centigrade

C) 600 Degree Centigrade to 800 Degree Centigrade

D) 800 Degree Centigrade to 1000 Degree Centigrade

79. What is the output pulse frequency of the full wave rectifier with input frequency of 50 Hz?

A) 40 Hz

B) 60 Hz

C) 100 Hz (Correct)

D) 200 Hz

88. What is the name of flux used for soldering electronic components?

A) Resin

B) Rosin (Correct)

C) Mild acid

D) Organic acid

80. Which diode is used in low power communication circuits?

A) Signal diodes (Correct)

B) Rectifier diodes

C) Switching diodes

D) High power diodes

89. How many types of soldering is used for joining metal surfaces?

A) Two (Correct)

B) Five

C) Four

D) Three

81. What is the disadvantage of the two diode full wave rectifier compared with a bridge rectifier?

A) DC output level is higher

B) The ripple frequency is higher

C) The need of bulky transformer (Correct)

D) Each diode carries half the load current

90. What is the full form of the abbreviation SPDT used in switches?

A) Single Phase Dual Throw

B) Single Pole Single Throw

C) Single Pole Double Throw (Correct)

D) Shared Pole Double Throw

82. What is the process of adding impurities to a pure semiconductor material?

A) Doping (Correct)

B) Etching

C) Forming

D) Diffusion

91. Which ratio of tin-lead combination is used for electronic component soldering work?

A) 40:60

B) 20:40

C) 60:40:00 (Correct)

D) 63:37:00

83. Which impurity is added to pure semiconductor to form N-type material?

A) Boron

B) Indium

C) Arsenic (Correct)

D) Gallium

92. How much time is required to make a quality soldered joint using soldering iron?

A) 3 - 7 seconds (Correct)

B) 7 - 10 seconds

C) 10 - 15 seconds

D) 15 - 20 seconds

84. What is the name of the process of converting AC into DC voltage?

A) Inverting

B) Rectifying (Correct)

C) Amplifying

D) Demodulating

93. Which type of soldering is used for electronic circuit?

A) Brazing

B) Soft soldering (Correct)

C) Hot soldering

D) Hard soldering

85. Which condition the mechanical zero error occur in panel meters?

A) At normal condition (Correct)

B) At load connected condition

C) At load connected condition

D) At voltage connected condition

94. What is the meaning of first letter indicated in the transistor code number BC 107?

A) Germanium material used

B) Silicon material used (Correct)

C) Antimony material used

D) Indium material used

86. Which bonding material is used for soldering a joint?

A) Oil

B) Flux (Correct)

C) Acid

D) Grease

95. What is the name of multi-stage amplifiers?

A) Cascoded amplifier

B) Cascaded amplifier (Correct)

C) Complementry symmetry amplifier

D) Darlington pair amplifier

87. What is the range of temperature used in soldering station?

96. How the negative feedback is called?

A) Regenerative feedback

B) Degenerative feedback (Correct)

C) Current controlled feedback

D) Voltage controlled feedback

97. Which configuration of transistor amplifier is most commonly used in electronic circuits?

A) Common base configuration

B) Common emitter configuration (Correct)

C) Common collector configuration

D) Common drain amplifier configuration

98. Why transistors made of silicon is preferred over the germanium semiconductor material?

A) Complex design

B) Higher thermal stability (Correct)

C) Requires complicated bias arrangement

D) Silicon transistor needs low cut-in-voltage

99. Why NPN type of transistors are preferred over the PNP type transistors?

A) NPN has lower switching speed

B) NPN has good bias stability

C) NPN has higher switching speed (Correct)

D) Low operating voltage

100. Which type of transistors are required to amplify signals from the microphone /transducer?

A) Low power transistors (Correct)

B) Medium power transistors

C) High power transistors

D) Epitaxial versa watt transistors

101. What type of packaging is generally used to transistors utilized for low power amplification?

A) Metal packaging

B) Plastic packaging (Correct)

C) Ceramic packaging

D) Plastic packaging with metal heatsinks

102. Which type of amplifier in used to operate the loud speaker?

A) IF amplifier

B) RF amplifier

C) Power amplifier (Correct)

D) Voltage amplifier

103. Which parameter of passive component can be calculated using the formula ?

A) Capacitance

B) Inductance

C) Capacitive reactance (Correct)

D) Inductive reactance

104. Which type of amplifier is used to operate the loud speaker?

A) IF Amplifier

B) RF Amplifier

C) Power Amplifier (Correct)

D) Voltage Amplifier

105. What is the purpose of using positive feed back in amplifiers?

A) To produce modulation

B) To produce demodulation

C) To produce oscillation (Correct)

D) To produce multiplexion

106. What are the basic components required for a clipping circuit?

A) Diode and resistor (Correct)

B) Transistor and diode

C) Diode and capacitor

D) Capacitor and resistor

107. Which circuit is used to clip portion of both positive and negative half cycle of input signal voltage?

A) Combination clipper circuit (Correct)

B) Biased negative clipper circuit

C) Biased positive clipper circuit

D) Unbiased clipper circuit

108. Which application the clamper circuit is used in electronics?

A) Radars

B) Radio receivers

C) Storage counters

D) Power supplies (Correct)

109. What is the name of the circuit that shifts the original signal in a vertical downward direction?

A) Peak clipper circuit

B) Negative clamping circuit (Correct)

C) Positive clamping circuit

D) Combination clipper circuit

110. Which type of clipper is that a small portion of the negative half cycle of signal is removed?

A) Biased positive clipper

B) Biased negative clipper (Correct)

C) Combination clipper

D) Positive clamper

111. What is the name of the circuit that shifts the waveform upward or downward without disturbing its shape?

A) Clipper circuit

B) Clamper circuit (Correct)

C) Biased clipper circuit

D) Combination clipper circuit

112. What is the function of clipper circuit?

A) Regulation

B) Rectification

C) Amplification

D) Wave shaping (Correct)

113. What is the name of the circuit that shifts the original

signal in a vertical upward direction?

- A) Peak clipper circuit
B) Negative clamping circuit (Incorrect)
C) **Positive clamping circuit**
D) Combination clipper circuit

114. English is a ____ language.

- A) **Common (Correct)**
B) Day
C) Night
D) Evening

115. We can learn English by ____?.

- A) Cooking
B) Playing
C) **Reading newspaper (Correct)**
D) None of these

116. Words that are used to name people, places, animals and things are _____.

- A) Person
B) Table
C) **Naming words (Correct)**
D) Key

117. Ramesh is working in Chennai. ____ likes the office environment.

- A) **He (Correct)**
B) It
C) That
D) What

118. 'It is going to be a sunny day tomorrow'. The action in this sentence is in _____ tense.

- A) **Future (Correct)**
B) Past
C) Date
D) Day

119. An exclamatory sentence ends with the _____.

- A) Full stop (.)
B) Comma (,)
C) Question mark (?)
D) **Exclamatory mark (!) (Correct)**

120. Wow! The flowers in the park are beautiful. This is a _____ sentence.

- A) Declarative (.)
B) **Exclamatory (!) (Correct)**
C) Imperative
D) Interrogative (?)

121. Krishna is a teacher, he wants to conduct classes online. Which of these devices can he use?

- A) Computer
B) Laptop
C) Tablet
D) **All of these (Correct)**

122. Saleem needs to talk about digital skills that are required at work. Which of these works needs digital skills?

- A) Communicating through emails and chat
B) Creating and editing documents and worksheets
C) Creating and editing worksheets
D) **All of these (Correct)**

123. What does CPU stand for?

- A) Cost per unit
B) Central power unit
C) **Central Processing Unit (Correct)**
D) Cutting power unit

124. _____ is called as the brain of the computer.

- A) Web Camera
B) Trackpad
C) Monitor
D) **Central Processing Unit (Correct)**

125. _____ is the most commonly used word for switching off a computer.

- A) Hang Up
B) Switch On
C) **Shut Down (Correct)**
D) Power On

126. Which of the following is the most common operating system?

- A) Printer
B) MS Office
C) Router
D) **Windows (Correct)**

127. Full form for OS is _____.

- A) **Operating System (Correct)**
B) Opening Screen
C) Opening Software
D) Original System

128. _____ is at the top of the MS Word screen.

- A) **Menu Bar (Correct)**
B) Taskbar
C) Space Bar
D) Scroll bar

129. What is the shortcut key for Print?

- A) Ctrl+Z
B) Ctrl+B
C) Ctrl+U
D) **Ctrl+P (Correct)**

130. Vanaja wants to save her excel workbook. How can she do it?

- A) By closing the sheet
B) **By pressing Ctrl and S on the keyboard (Correct)**
C) By deleting it
D) By writing it

131. Which of the following is a smart device?

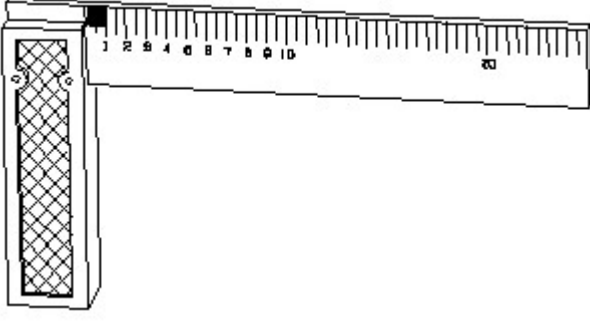
- A) Smart Watch
B) Smart Phone
C) Smart TV
D) **All of these (Correct)**

132. Alexa is a _____ assistant.

- A) **Digital voice controlled (Correct)**
B) Office Assistant
C) Home Assistant
D) None of these

133. 1). Identify the name of tool? | ಉಪಕರಣದ ಹೆಸರನ್ನು

ಗುರುತಿಸುವುದೇ?



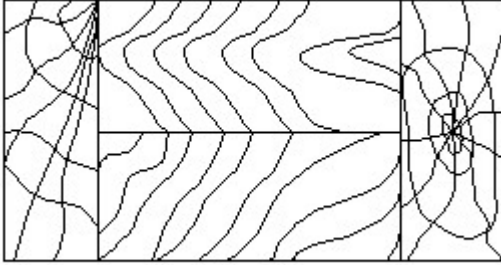
A) Try square | ಟ್ರೈ ಸ್ಕ್ವೇರ್
(Correct)

B) Surface gauge | ಮೇಲ್ಮೈ ಮಾಪಕ

C) Steel rule | ಸ್ಟೀಲ್ ರೂಲ್

D) Feeler gauge | ಫೀಲರ್ ಗೇಜ್

134. Identify the conventional symbol of material? | ವಸ್ತುವಿನ ಕನ್ವೆಷನಲ್ ಚಿಹ್ನೆಯನ್ನು ಗುರುತಿಸಿ?



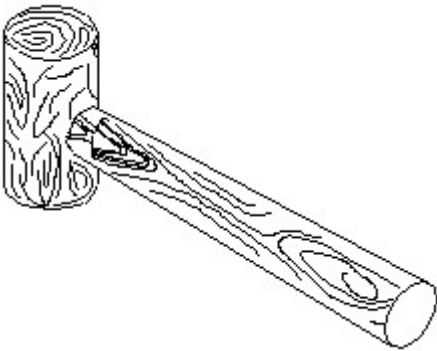
A) Lead | ಲೀಡ್

B) Glass | ಗಾಜು

C) Wood | ಮರ (Correct)

D) Paper | ಪೇಪರ್

135. Identify the name of tool? | ಉಪಕರಣದ ಹೆಸರನ್ನು ಗುರುತಿಸುವುದೇ?



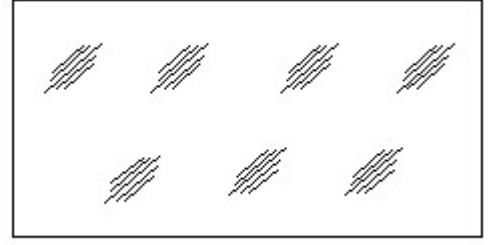
A) Ball pein hammer | ಬಾಲ್ ಪೆನ್ ಸುತ್ತಿಗೆ

B) Mallet | ಮ್ಯಾಲೆಟ್ (Correct)

C) Cross pein hammer | ಕ್ರಾಸ್ ಪೆನ್ ಸುತ್ತಿಗೆ

D) Straight pein hammer | ಸ್ಟ್ರೈಟ್ ಪೆನ್ ಸುತ್ತಿಗೆ

136. Identify the conventional symbol of material? | ವಸ್ತುವಿನ ಕನ್ವೆಷನಲ್ ಚಿಹ್ನೆಯನ್ನು ಗುರುತಿಸಿ?



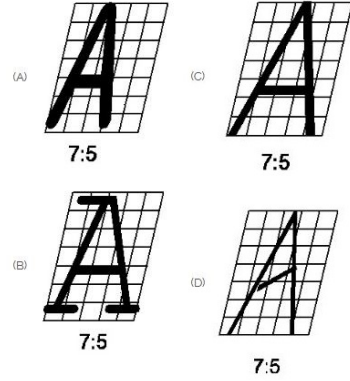
A) Concrete | ಕಾಂಕ್ರೀಟ್

B) Steel | ಸ್ಟೀಲ್

C) Wood | ಮರ

D) Glass | ಗಾಜು (Correct)

137. Which single stroke inclined letter A is correct as per IS standard? | IS ಮಾನದಂಡದ ಪ್ರಕಾರ ಯಾವ ಏಕ ಸ್ಟ್ರೋಕ್ ಇಳಿಜಾರಿನ ಅಕ್ಷರ A ಡೆರಿಯಾಗಿದೆ?



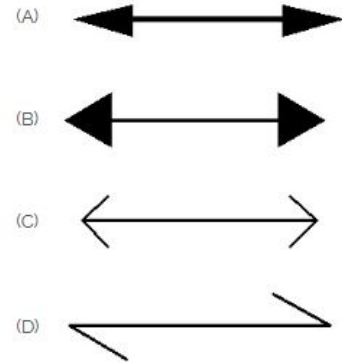
A) A

B) B

C) C (Correct)

D) D

138. Which arrow head is correct as per standard? | ಮಾನದಂಡದ ಪ್ರಕಾರ ಯಾವ ಬಾಣದ ಹೆಡ್ ಸರಿಯಾಗಿದೆ?



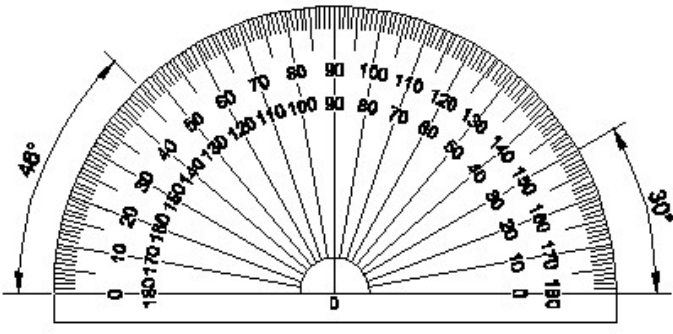
A) A (Correct)

B) B

C) C

D) D

139. Identify the name of instrument? | ಉಪಕರಣದ ಹೆಸರನ್ನು ಗುರುತಿಸುವುದೇ?

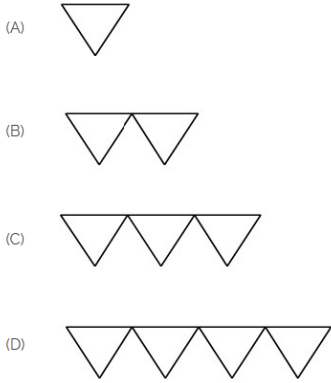


- A) Set square | ಸೆಟ್ ಸ್ಕ್ವೇರ್
 B) Protractor | ಪ್ರೊಟ್ರಾಕ್ಟರ್ (Correct)
 C) French curve | ಫ್ರೆಂಚ್ ಕರ್ವ್
 D) T square | ಟ್ ಸ್ಕ್ವೇರ್

140. Compass used to draw for _____. | ಕಂಪಾಸ್ ಅನ್ನು _____ ಗೆ ಸೆಳೆಯಲು ಬಳಸಲಾಗುತ್ತದೆ.

- A) rectangle | ಆಯಾತ
 B) square | ಚದರ
 C) circle | ವೃತ್ತ (Correct)
 D) triangle | ತ್ರಿಕೋನ

141. Which is roughness symbol for roughness grade N8?



- A) A
 B) B (Correct)
 C) C
 D) D (Incorrect)

142. 1). Identify the name of tool? | ಉಪಕರಣದ ಹೆಸರನ್ನು ಗುರುತಿಸುವುದೇ?



- A) Try square | ಟ್ರೈ ಸ್ಕ್ವೇರ್ (Correct)
 B) Surface gauge | ಮೇಲ್ಮೈ ಮಾಪಕ
 C) Steel rule | ಸ್ಟೀಲ್ ರೂಲ್
 D) Feeler gauge | ಫೀಲರ್ ಗೇಜ್

143. A person with a growth mindset is always willing to

_____. | ಬೆಳವಣಿಗೆಯ ಮನಸ್ಥಿತಿ ಹೊಂದಿರುವ ವ್ಯಕ್ತಿಯು ಯಾವಾಗಲೂ ಸಿದ್ಧರಿದ್ದಾರೆ.

- A) relax | ವಿಶ್ರಾಂತಿ
 B) grow, change, learn | ಬೆಳೆಯಿರಿ, ಬದಲಿಸಿ, ಕಲಿಯಿರಿ (Correct)
 C) keep quiet | ಮೌನವಾಗಿರಿ
 D) become rich | ಶ್ರೀಮಂತರಾಗುತ್ತಾರೆ

144. Jobs that have become outdated in the past 5 years _____. | ಕಳೆದ 5 ವರ್ಷಗಳಲ್ಲಿ ಹಳತಾದ ಕೆಲಸಗಳು _____

- A) STD booth | STD ಬೂತ್ (Correct)
 B) ola | ಓಲಾ
 C) uber | ಉಬರ್
 D) swiggy | ಸ್ವಿಗ್ಗಿ

145. Ethics means _____. | ನೀತಿಶಾಸ್ತ್ರ ಎಂದರೆ _____

- A) decide what is right and wrong for a human conduct | ಮಾನವ ನಡವಳಿಗೆ ಯಾವುದು ಸರಿ ಮತ್ತು ತಪ್ಪು ಎಂದು ನಿರ್ಧರಿಸಿ (Correct)
 B) name of a city | ಒಂದು ನಗರದ ಹೆಸರು
 C) employability skills | ಉದ್ಯೋಗ ಕೌಶಲ್ಯಗಳು
 D) not relevant to society | ಸಮಾಜಕ್ಕೆ ಸಂಬಂಧಿಸಿಲ್ಲ

146. Identify the improper term. | ಅಸಮರ್ಪಕ ಪದವನ್ನು ಗುರುತಿಸಿ.

- A) Green pollution | ಹಸಿರು ಮಾಲಿನ್ಯ (Correct)
 B) Water pollution | ಜಲ ಮಾಲಿನ್ಯ
 C) Air pollution | ವಾಯು ಮಾಲಿನ್ಯ
 D) Sound pollution | ಧ್ವನಿ ಮಾಲಿನ್ಯ

147. Values are _____. | ಮೌಲ್ಯಗಳು _____

- A) not punctual | ಸಮಯಪ್ರಜ್ಞೆಯಿಲ್ಲ
 B) motivates our attitude and action | ನಮ್ಮ ವರ್ತನೆ ಮತ್ತು ಕ್ರಿಯೆಯನ್ನು ಪ್ರೇರೇಪಿಸುತ್ತದೆ (Correct)
 C) very costly | ಬಹಳ ದುಬಾರಿ
 D) all have same value | ಎಲ್ಲಾ ಒಂದೇ ಮೌಲ್ಯವನ್ನು ಹೊಂದಿವೆ

148. To grow yourself you must _____. | ನೀವೇ ಬೆಳೆಯಲು ನೀವು ಮಾಡಬೇಕು _____

- A) know your office | ನಿಮ್ಮ ಕಚೇರಿ ತಿಳಿದಿದೆ
 B) know yourself | ನಿನ್ನನ್ನು ನೀನು ತಿಳಿಯಿರಿ (Correct)
 C) know your institute | ನಿಮ್ಮ ಸಂಸ್ಥೆಯನ್ನು ತಿಳಿಯಿರಿ
 D) know your country | ನಿಮ್ಮ ದೇಶವನ್ನು ತಿಳಿಯಿರಿ

149. Time management _____. | ಸಮಯ ನಿರ್ವಹಣೆ _____

- A) complete your task on time | ನಿಮ್ಮ ಕೆಲಸವನ್ನು ಸಮಯಕ್ಕೆ ಪೂರ್ಣಗೊಳಿಸಿ (Correct)
 B) managing time | ಸಮಯವನ್ನು ನಿರ್ವಹಿಸುವುದು

C) hard skill | ಕಠಿಣ ಕೌಶಲ್ಯ

D) problem solving | ಸಮಸ್ಯೆ ಪರಿಹರಿಸುವ

A) 18th century | 18 ನೇ ಶತಮಾನ (Correct)

B) 19th century | 19 ನೇ ಶತಮಾನ

C) 20th century | 20 ನೇ ಶತಮಾನ

D) 21st century | 21 ನೇ ಶತಮಾನ

150. _____ is major changes takes place in manufacturing. | _____ ತಯಾರಿಕೆಯಲ್ಲಿ ಪ್ರಮುಖ ಬದಲಾವಣೆಗಳು ನಡೆಯುತ್ತವೆ.

A) Green revolution | ಹಸಿರು ಕ್ರಾಂತಿ

B) Industry revolution | ಕೈಗಾರಿಕಾ ಕ್ರಾಂತಿ (Correct)

C) Water revolution | ಜಲ ಕ್ರಾಂತಿ

D) Food revolution | ಆಹಾರ ಕ್ರಾಂತಿ

152. What is stress? | ಒತ್ತಡ ಎಂದರೇನು?

A) Feeling of joy | ಸಂತೋಷದ ಭಾವನೆ

B) Feeling of surprise | ಆಶ್ಚರ್ಯದ ಭಾವನೆ

C) Feeling of delight | ಆನಂದದ ಭಾವನೆ

D) Feeling of frustration / disappointment | ಹತಾಶೆ / ನಿರಾಶೆಯ ಭಾವನೆ (Correct)

151. 1st industrial revolution started in _____. | 1 ನೇ ಕೈಗಾರಿಕಾ ಕ್ರಾಂತಿ ಪ್ರಾರಂಭವಾಯಿತು _____