

RACT 2025-27 1ST YEAR APRIL MONTHLY TEST 2026

Q. ID: ITISKILL56782N

April 2026

Govt iti udupi

Question Paper

Student: Sharan s poojari

Score: 22/25 (88.00%)

Code: 0079

1. Which type of condenser is used in window air conditioner?

- A) **Fins and tube (Correct)** B) Plate and tube
C) Plate and coil D) Bare tube

2. Which type of evaporator is used in window air conditioner?

- A) Bare tube B) Plate and tube
C) Fins and plate **D) Fins and tube (Correct)**

3. Which material is used for making fins of condenser in a window air conditioner?

- A) Brass B) Copper
C) Cast iron **D) Aluminium (Correct)**

4. What is the value of running capacitor used for 1.5 TR window air conditioner?

- A) **36 MFD (Correct)** B) 40 MFD
C) 80 MFD D) 100 MFD

5. What is the value of starting capacitor used for 1TR window air conditioner?

- A) 40 MFD B) 60 MFD
C) 80 MFD (Correct) D) 100 MFD

6. What is the purpose of relay used in window air conditioner?

- A) **Disconnect the starting capacitor (Correct)** B) Disconnect the running capacitor
C) Disconnect the fan capacitor D) Disconnect the winding

7. Which is indicated by the arrow mark on filter drier component?

- A) Flow direction of air B) Position of capillary tube
C) Flow direction of refrigerant (Correct) D) Arrangement of desiccant and filter

8. Which winding has high inductance value in CSR compressor motor?

- A) Common winding **B) Running winding**
C) Starting winding (Incorrect) D) Auxiliary winding

9. Where the relay coil is internally connected in voltage relay?

- A) Across 1 and 2 B) Across 5 and 1
C) Across 5 and 2 (Correct) D) Across 2 and 4

10. Which stabilizer capacity is used for 1 Ton window air conditioner?

- A) 2 KVA **B) 3 KVA**
C) 4 KVA (Incorrect) D) 5 KVA

11. How to neutralise the concentration of leaked ammonia from air

- A) Recover ammonia from air **B) Spraying a lot of water (Correct)**
C) Shut down the plant D) Spray Hydrochloric acid

12. What is the reason for excessive frost on evaporator coil in window AC?

- A) Evaporator fins not blocked by dust B) Blower rotating at higher speed
C) Air filter blocked completely D) More air circulation in evaporator (Incorrect)

13. What is the remedy for the defective OLP in a window air conditioner?

- A) Repair the OLP **B) Replace the OLP (Correct)**
C) Remove the parts D) Repair the heater element

14. What is the reason for the compressor does not start but the fan motor works normally in window AC?

- A) Defective blower B) Defective fan motor
C) Defective fan capacitor **D) Defective compressor motor (Correct)**

15. What is the cause of reduced supply air throw though air filter is clean in window AC?

- A) No frost in the evaporator **B) Frost accumulated in the evaporator (Correct)**
C) Dust accumulated in the condenser D) No dust accumulated in the evaporator

16. What is the diameter of the semicircle, if the circumference of the semicircle is 21.98 cm?

A) 8.55 cm (Correct)

B) 8 cm

C) 7.55 cm

D) 7 cm

17. Which force acts on rivets?

A) Tensile force

B) Compressive force

C) Shear force (Correct)

D) Bending force

18. How the years is denoted in simple interest calculations?

A) P

B) I

C) n (Correct)

D) r

19. What is the work done in joules if a load of 15.5 kg is lifted through a height of 4.4 metres?

A) 639 Joules

B) 649 Joules

C) 659 Joules

D) 669 Joules (Correct)

20. How many millimetres are there in 1 inch?

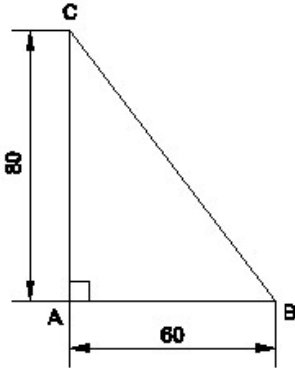
A) 2.54 mm

B) 25.4 mm (Correct)

C) 24.5 mm

D) 2.45 mm

21. Identify the name of the triangle? | ತ್ರಿಕೋನದ ಹೆಸರನ್ನು ಗುರುತಿಸುವುದೇ?



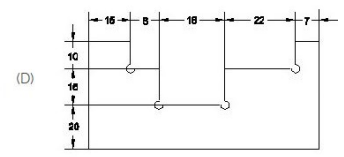
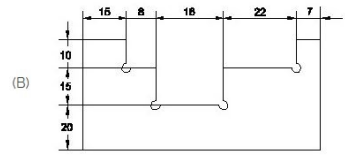
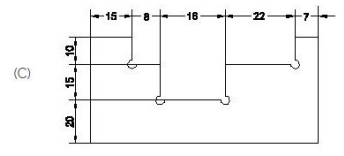
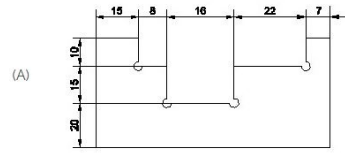
A) Equilateral triangle | ಸಮಕೋನ ತ್ರಿಕೋನ

B) Isosceles triangle | ಸಮದ್ವಿಬಾಹು ತ್ರಿಕೋನ

C) Scalene triangle | ಸ್ಕೇಲಿನ್ ತ್ರಿಕೋನ

D) Right angle triangle | ಬಲ ಕೋನ ತ್ರಿಕೋನ (Correct)

22. Identify the correct aligned system dimension? | ಸರಿಯಾದ ಜೋಡಿಸಲಾದ ಸಿಸ್ಟಮ್ ಆಯಾಮವನ್ನು ಗುರುತಿಸುವುದೇ?



A) A (Correct)

B) B

C) C

D) D

23. GMAW stands for _____ | GMAW ಎಂದರೆ _____

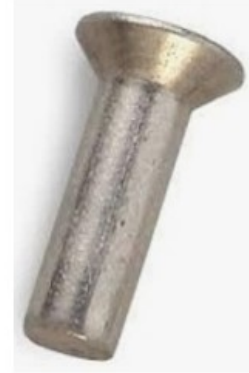
A) Gun Metal Arc Welding

B) Gas Metal Arc Welding (Correct)

C) Gas Tungsten Arc Welding

D) Germanium Metal Arc Welding

24. The rivet head for a general purpose shown in the figure below is _____ | ಕೆಳಗಿನ ಚಿತ್ರದಲ್ಲಿ ತೋರಿಸಿರುವ ಸಾಮಾನ್ಯ ಉದ್ದೇಶಕ್ಕಾಗಿ ರಿವೆಟ್ ಹೆಡ್:



A) snap | ಸ್ನಾಪ್

B) pan | ಪ್ಯಾನ್

C) counter sunk | ಕೌಂಟರ್ ಸುಂಕ್ (Correct)

D) flat | ಫ್ಲಾಟ್

25. Which device is used to start and stop a motor? | ಮೋಟಾರ್ ಅನ್ನು ಪ್ರಾರಂಭಿಸಲು ಮತ್ತು ನಿಲ್ಲಿಸಲು ಯಾವ ಸಾಧನವನ್ನು ಬಳಸಲಾಗುತ್ತದೆ?

A) Rotor | ರೋಟರ್

B) Starter | ಸ್ಟಾರ್ಟರ್ (Correct)

C) Stator | ಸ್ಟೇಟರ್

D) Slip ring | ಸ್ಲಿಪ್ ರಿಂಗ್